

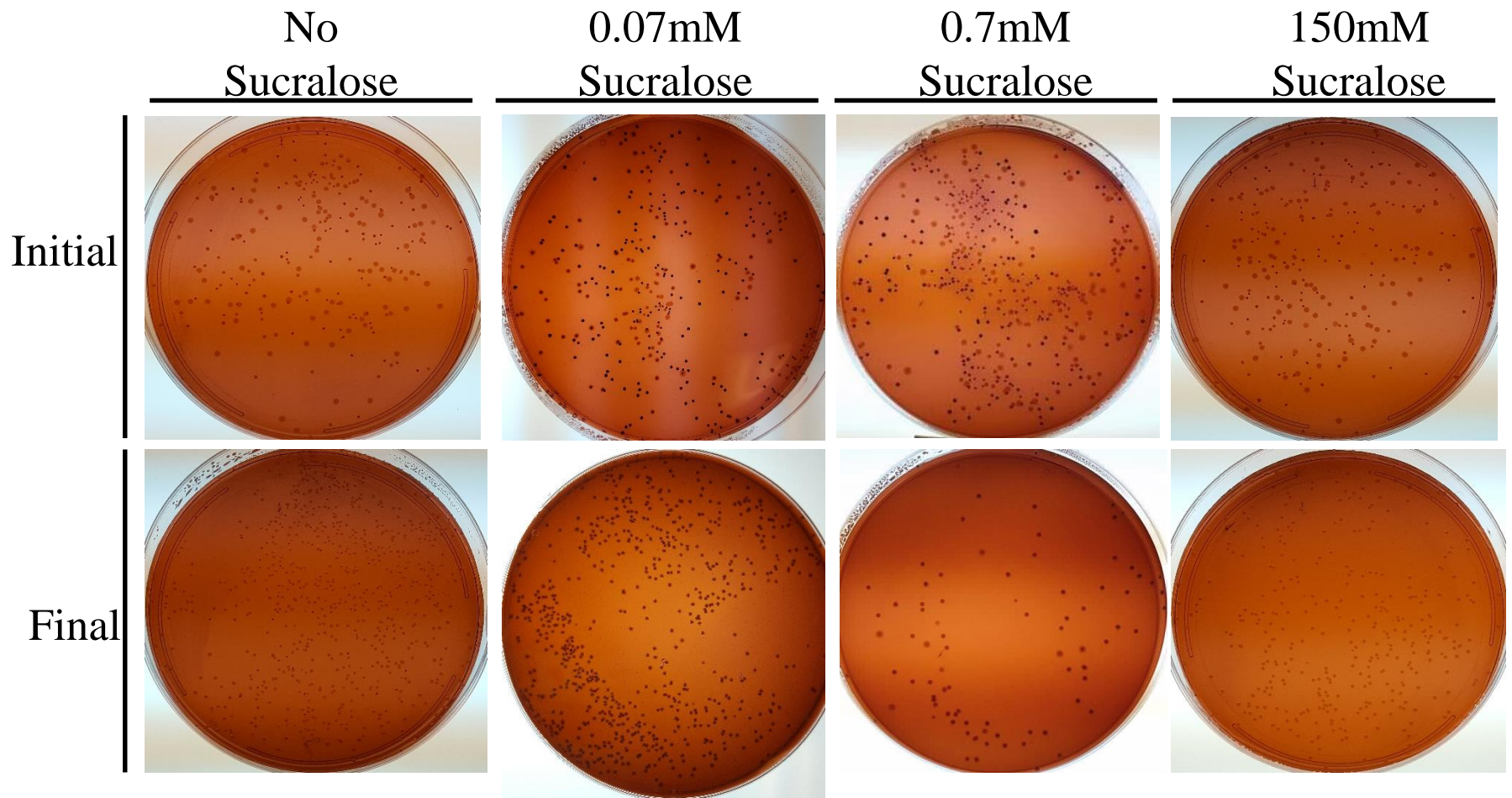
<i>E.aerogenes</i> Growth Data - No Sucralose Added												
Time (minutes)	No Sucralose (NS)			0.07mM Sucralose (LS) Adapted			0.7mM Sucralose (MS) Adapted			150mM Sucralose (HS) Adapted		
0	0.100	0.147	0.138	0.163	0.212	0.131	0.165	0.114	0.173	0.200	0.160	0.177
30	0.230	0.327	0.267	0.340	0.438	0.279	0.370	0.222	0.376	0.377	0.452	0.408
60	0.507	0.566	0.438	0.617	0.693	0.520	0.664	0.484	0.621	0.713	0.800	0.760
90	0.818	0.914	0.793	0.998	1.089	0.892	1.135	0.849	1.013	1.128	1.101	1.157
120	1.227	1.270	1.244	1.410	1.406	1.265	1.421	1.179	1.444	1.525	1.414	1.473
150	1.478	1.061	1.225	1.461	1.080	1.407	1.353	1.418	1.403	1.662	1.628	1.622
180	1.486	1.355	1.284	1.458	1.380	1.089	1.542	1.070	1.481	1.759	1.683	1.717

<i>E.aerogenes</i> Growth Data - 150mM Sucralose added												
Time (minutes)	No Sucralose (NS)			0.07mM Sucralose (LS) Adapted			0.7mM Sucralose (MS) Adapted			150mM Sucralose (HS) Adapted		
0	0.151	0.100	0.171	0.137	0.129	0.136	0.125	0.149	0.131	0.093	0.060	0.101
30	0.200	0.113	0.224	0.193	0.173	0.199	0.188	0.193	0.203	0.133	0.118	0.162
60	0.322	0.165	0.336	0.329	0.246	0.356	0.327	0.275	0.316	0.256	0.219	0.336
90	0.509	0.253	0.540	0.558	0.422	0.584	0.530	0.377	0.537	0.464	0.367	0.637
120	0.808	0.458	0.811	0.859	0.667	0.872	0.809	0.536	0.739	0.773	0.655	0.938
150	1.053	0.652	1.055	1.065	0.821	1.081	0.981	0.651	0.852	1.110	0.794	1.213
180	1.157	0.965	1.299	1.162	0.909	1.007	1.082	0.835	0.907	1.427	0.970	1.433

<i>E.coli</i> Growth Data - No Sucralose Added												
Time (minutes)	No Sucralose (NS)			0.07mM Sucralose (LS) Adapted			0.7mM Sucralose (MS) Adapted			150mM Sucralose (HS) Adapted		
0	0.113	0.149	0.166	0.110	0.112	0.159	0.117	0.132	0.054	0.097	0.103	0.101
30	0.155	0.304	0.347	0.167	0.251	0.304	0.163	0.240	0.065	0.158	0.226	0.160
60	0.191	0.478	0.533	0.348	0.410	0.525	0.435	0.696	0.065	0.294	0.538	0.142
90	0.480	0.634	0.737	0.625	0.766	0.845	0.861	1.040	0.263	0.611	0.964	0.354
120	0.673	0.930	1.099	0.962	1.090	1.229	1.372	1.469	0.586	1.008	1.326	1.026
150	1.213	1.255	1.369	1.213	1.464	1.536	1.557	1.621	0.542	1.398	1.650	1.539
180	1.454	1.492	1.570	1.455	1.639	1.599	1.551	1.553	0.933	1.631	1.772	1.717

<i>E.coli</i> Growth Data - 150mM Sucralose added												
Time (minutes)	No Sucralose (NS)			0.07mM Sucralose (LS) Adapted			0.7mM Sucralose (MS) Adapted			150mM Sucralose (HS) Adapted		
0	0.133	0.122	0.141	0.125	0.139	0.127	0.108	0.107	0.168	0.138	0.098	0.093
30	0.157	0.122	0.163	0.164	0.133	0.159	0.146	0.107	0.201	0.155	0.107	0.123
60	0.170	0.123	0.182	0.213	0.136	0.217	0.167	0.113	0.221	0.237	0.176	0.194
90	0.183	0.127	0.200	0.296	0.135	0.253	0.184	0.113	0.232	0.396	0.292	0.341
120	0.191	0.125	0.210	0.294	0.132	0.293	0.183	0.119	0.219	0.637	0.455	0.494
150	0.193	0.133	0.211	0.357	0.143	0.305	0.177	0.119	0.251	0.958	0.690	0.912
180	0.177	0.138	0.184	0.384	0.141	0.357	0.191	0.121	0.310	1.179	0.760	1.187

Table S1: Raw OD600 values for growth of bacterial strains in the absence (No Sucralose Added) and presence (150mM Sucralose added) of sucralose



Supplementary Figure 1: *E.aerogenes* outcompetes *E.coli* in the presence of sucralose. Representative plates showing the presence of both *E.aerogenes* and *E.coli* after overnight incubation in the absence of sucralose, while only *E.aerogenes* is present after overnight incubation in the presence of any concentration of sucralose. *E.aerogenes* colonies appear lighter and larger, while *E.coli* appear darker and smaller on the red agar in images.