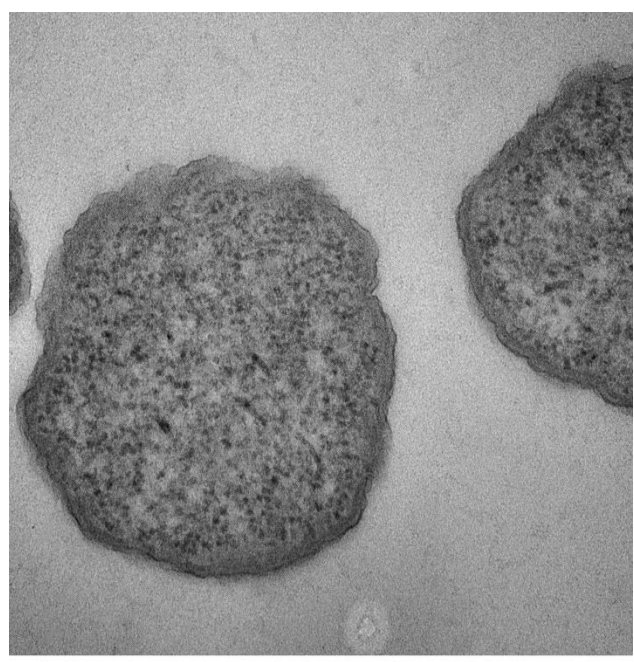
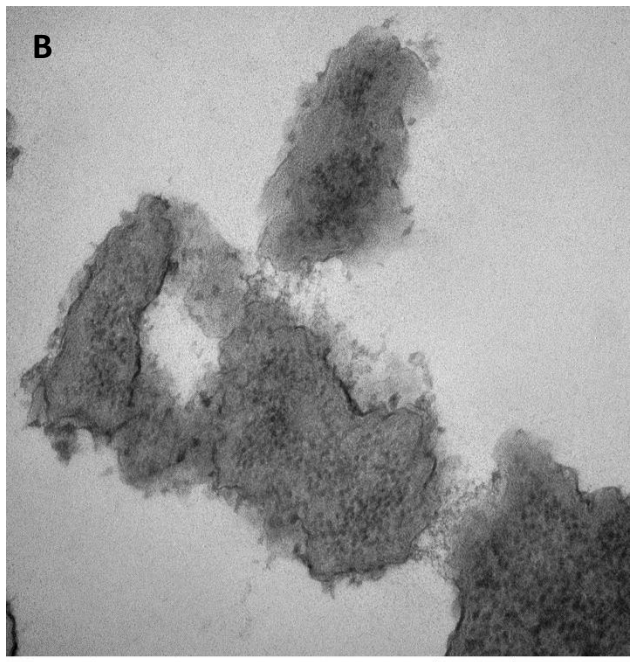
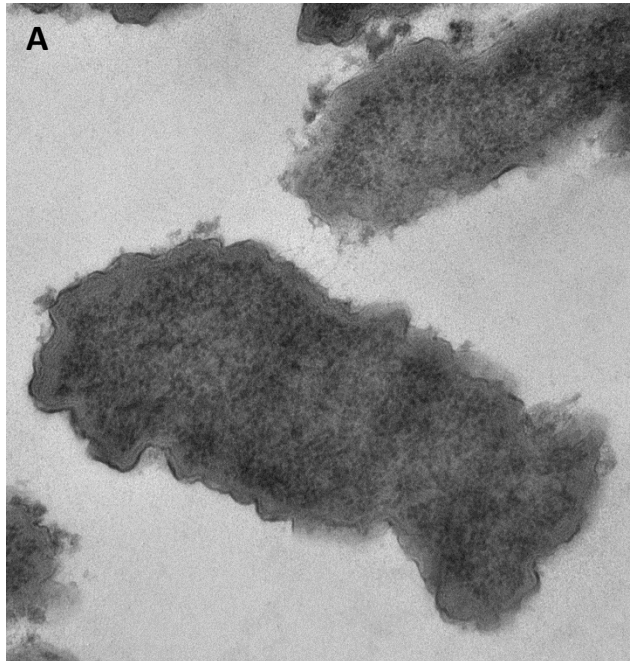
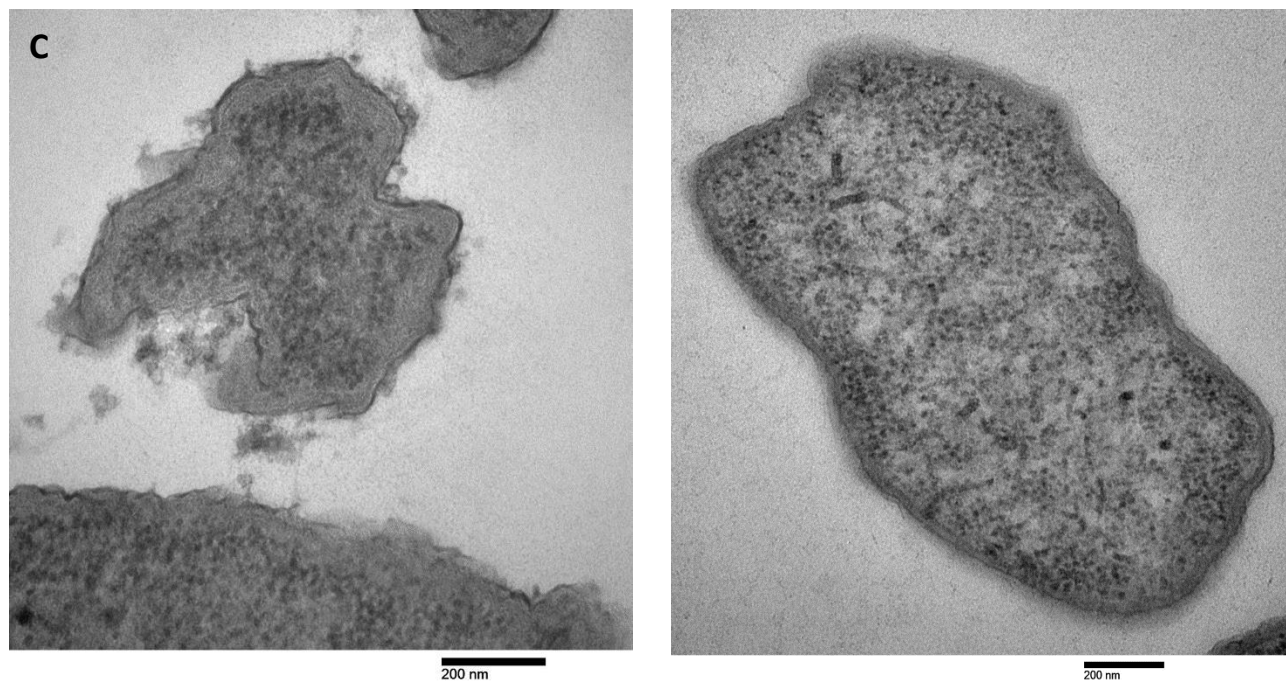


## Capsular Polysaccharide Production in *Escherichia coli* K-30 Strain E69 May Increase Following Pretreatment with Tetracycline but not Polymyxin B

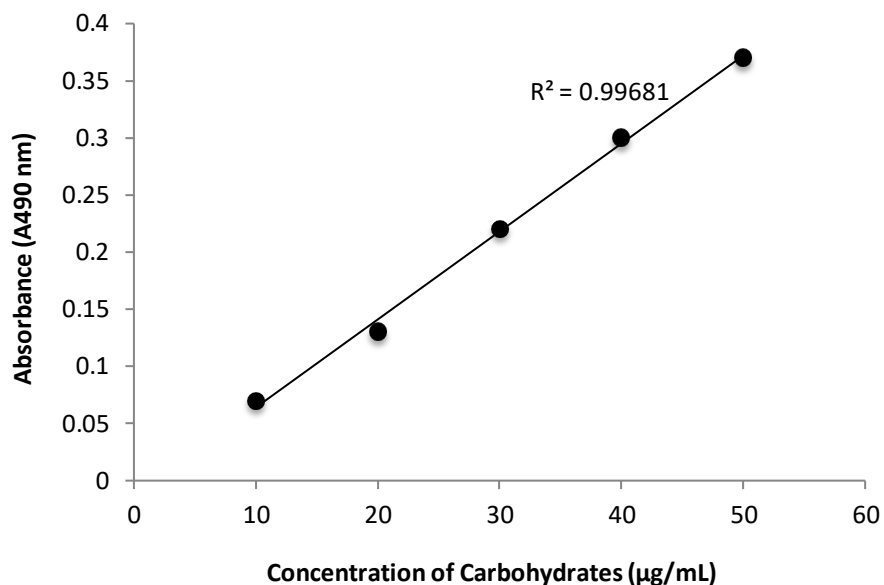
Eric Bhatti, Avery C. Palmer #, Sanya Ranchal, Melody Tung  
Department of Microbiology and Immunology, University of British Columbia

### SUPPLEMENTAL MATERIAL





**FIG S1. TEM images of E69 strain (left column) and CWG655 mutant (right column) stained with ruthenium red dye.** 100 nm thick cross sections of cells were imaged at 70,000x (A), 100,000x (B, C) original magnification at 80.0 kV.



**FIG S2. Standard curve showing the positive correlation between concentration of carbohydrates (µg/ml) and absorbance values at 490 nm ( $A_{490}$ ) constructed by exposing solutions with known concentrations of carbohydrates to the phenol sulphuric acid assay.**  $R^2$  value of 0.99 represents a very strong linear correlation between concentration of carbohydrates and  $A_{490}$  values.