

Effect of Temperature, Inducer Concentration, and *Escherichia coli* Cytosolic Redox State on MBP-PI2 Expression

Ian Ang, Antonio Atte, Ben Halim, Jason Jassal
Department of Microbiology & Immunology, University of British Columbia

SUPPLEMENTAL MATERIAL

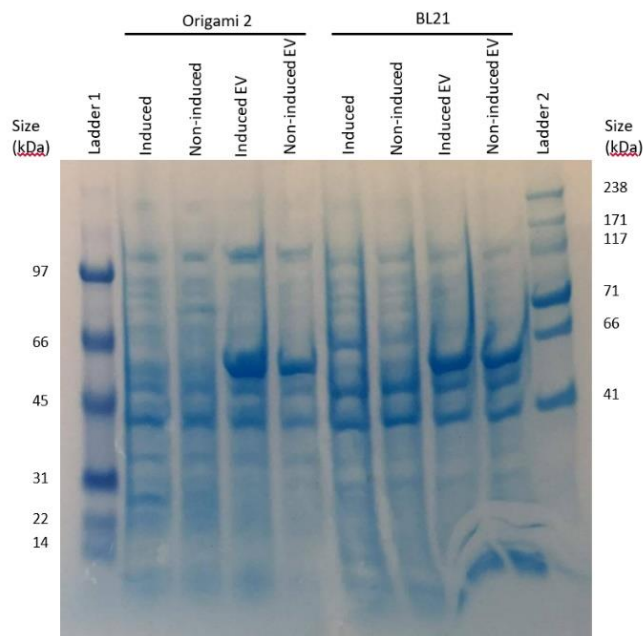


FIG. S1 SDS-PAGE analysis of MBP-PI2 induced with 0.3 mM IPTG. 2 mL IPTG induced *E. coli* strains Origami 2 (DE3) and BL21 (DE3) cells at 2 hours. Empty vector (EV) lanes indicate the use of pMAL-c2X plasmids without the *pi2* gene insert. Final concentration of IPTG was recorded at 0.3 mM. Only crude cell lysates were resolved on a 10% SDS-PAGE gel.

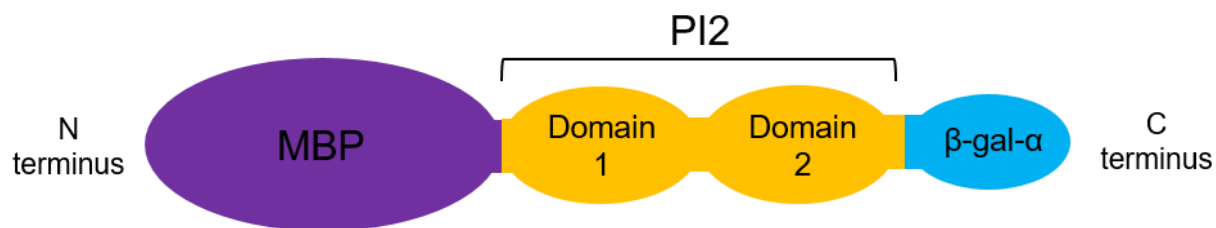


FIG. S2 Proposed MBP-PI2 fusion protein construct. The proposed MBP-PI2 construct with MBP fused to the N-terminus of PI2 and the β-gal-α protein fused to the C-terminus of PI2. The PI2 protein contains two functional domains, each with a reaction centre.